



FOOD AND DRINK ■ AGRICULTURE AND FARMING ■ PAPER AND PACKAGING ■ ELECTRICAL AND ELECTRONIC



PHARMACEUTICAL ■ CHEMICAL ■ PUBLIC SERVICES ■ CONSTRUCTION ■ HEALTH AND MEDICAL SERVICES ■ POWER

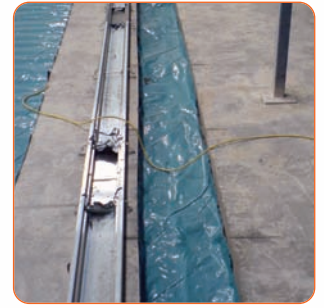
Resin flooring and screeding specialists

INTRODUCTION

OUR AIM AT FLO-DEK (UK) LTD IS TO PROVIDE THE HIGHEST LEVEL OF CUSTOMER SERVICE AND SATISFACTION. CONTRACTING BY ITS NATURE OFTEN THROWS UP THE UNEXPECTED AND THEREFORE WE UNDERSTAND THE NEED TO GO THAT 'EXTRA MILE' TO ENSURE A SUCCESSFUL PROJECT. WE CONSIDER OURSELVES TO BE A SOLUTION PROVIDER WHILST WORKING IN PARTNERSHIP WITH OUR CLIENTS.



FLOORING ESSENTIALS



- **ENABLING WORKS**
- **UNDERLAYMENT SCREEDS**
- **JOINTS AND FALLS**
- **SITE SURVEYS**



Attention to detail in the planning and specification stage often determines the overall success of a project. We can provide sound advice along with practical solutions to satisfy your particular requirements.



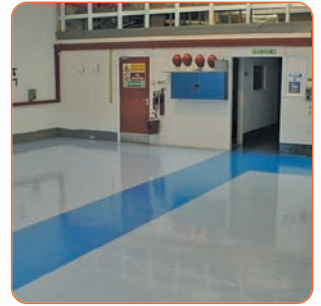
- PUMPABLE SYSTEMS
- RAPID CURING SCREEDS
- POWER FLOATED SYSTEMS
- POLYMER MODIFIED SCREEDS

CEMENTITIOUS SYSTEMS

Cementitious systems form the backbone of many industrial flooring projects. Fast-track turnaround on large areas can be accommodated using these services and disciplines.

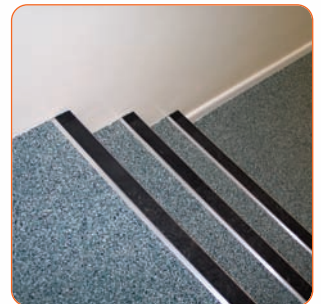


RESIN SYSTEMS – POLYURETHANE AND EPOXY



- **COATING SYSTEMS**
- **SELF-SMOOTHING SYSTEMS**
- **RESIN SCREEDS**
- **BROADCAST SYSTEMS
(COLOUR QUARTZ AGGREGATE AND FLAKE)**

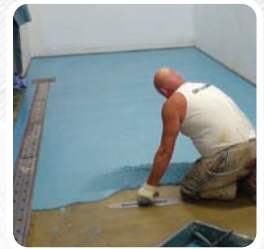
Health and safety, hygiene, chemical resistance, durability and aesthetic value are all concerns that can be addressed by application of the correct resin flooring system.



- METHYL METHACRYLATE (MMA) SYSTEMS
- ANTI-STATIC/CONDUCTIVE FLOORING
- DESIGNER SYSTEMS
- SLIP RESISTANT SYSTEMS

INNOVATIVE SOLUTIONS

Do you have an unusual, uncommon flooring requirement? Are you limited by other external factors? We will not promise the impossible but there may be a system that provides a solution.



■ TANK AND BUND LINING

Upgrade your existing storage and containment facilities which may be showing signs of deterioration, corrosion or just require a change of use.



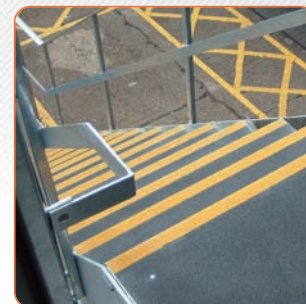
■ GRP LINING SERVICES

We can provide long term, seamless fibreglass lining solutions for water features, ponds and other containment areas. This on site operation can offer a practical solution to a maintenance problem.



■ GRP PRODUCTS – FIBREGLASS GRATING, STAIRTREADS AND NOSINGS

Durable, non-corrosive fibreglass products provide a maintenance free alternative to traditional metal products. Create a safer environment by utilising fibreglass grating, stairtreads and nosings.



■ GRP PRODUCTS – SPILL CONTAINMENT

All hazardous chemicals and oils should be stored within a bund or on a spill tray. Our range of GRP spill containment products enable you to conform to current legislation using practical, cost effective solutions.



■ WALL LININGS

Utilise the benefits of solvent free or conventional technology to provide durable, aseptic, easy to clean surfaces with the option of reinforcement for areas of high impact and abrasion.



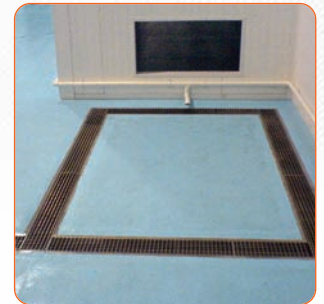
■ ROOF REFURBISHMENT

Liquid applied, elastomeric coatings combined with polyester fabric or glass fibre reinforcement offer a range of flexible but durable waterproofing solutions.



■ DRAINAGE CHANNELS

Fully welded 304/316 stainless steel drainage channels with associated gullies, rodding eyes and manhole covers provide an efficient and hygienic method of conveying waste liquids and solids for disposal.



■ SPECIALIST FABRICATION

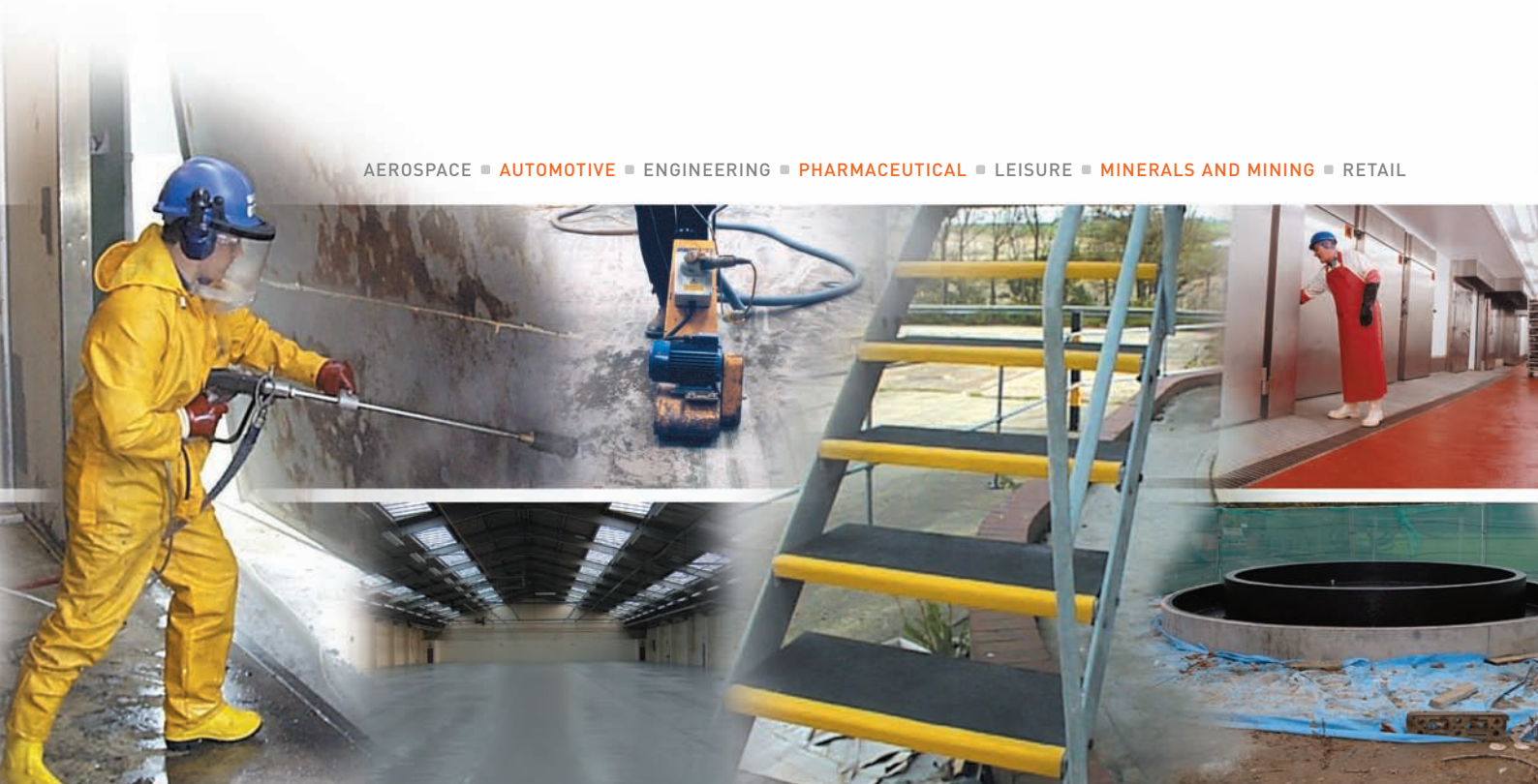
We can provide a range of 304/316 stainless steel products. These include kerbs, coving, bollards, buffer rails, housings and much more, manufactured to meet your specific requirements.





www.flo-dek.com

AEROSPACE ■ AUTOMOTIVE ■ ENGINEERING ■ PHARMACEUTICAL ■ LEISURE ■ MINERALS AND MINING ■ RETAIL



TRANSPORTATION ■ TELECOMMUNICATIONS ■ AGRICULTURE AND FARMING ■ PAPER AND PACKAGING ■ ELECTRICAL AND ELECTRONIC

MIDLAND AND NORTHERN OFFICE

Flo-Dek (UK) Ltd, Unit 3
Blue Ball Business Centre
Caunsall Road, Caunsall
Kidderminster DY11 5YB

T 0870 405 7777
F 01562 851122

SOUTH EAST OFFICE

Flo-Dek (UK) Ltd
Lodge Park, Lodge Lane
Langham, Colchester
CO4 5NE

T 0870 405 7777
F 01206 233750

SOUTH WEST OFFICE

Flo-Dek (UK) Ltd
202 Stroud Road
Gloucester
GL1 5LA

T 0870 405 7777
F 01452 385885



UCRETE
LICENSED
CONTRACTOR

FeRFA
The Resin Flooring Association

